



LZ Series - LZW4

Vaportight Wide 4' Body

24,000 - 39,000 Lumens

Project:

Location:

Cat.No:

Notes:

Product Description

The LZ Series Wide Body 4' fixture is a high output vaportight fixture, ideal for applications needing extensive coverage on high ceilings. It offers versatility with multiple lumen packages, mounting options, lens styles and sensors. The casing is made in the USA with a robust build and a thick seal for durability in dusty or wet environments, it suits installation heights from 16 to 45 feet. Final assembly in Ontario, Canada ensures meticulous craftsmanship, making it the ideal lighting solution for your needs.

Application

This unit excels in industrial, commercial, and agricultural settings where protection against water and dust is essential. It performs exceptionally in demanding applications including washbays, dairy barns, sheep barns, horse barns, pig barns, welding facilities, concrete plants, car washes, and numerous other challenging environments, making it an exceptional choice for the most demanding conditions.

Features

- Configurations exceeding 140 lm/w.
- Standard 0-10V dimming for control/precision.
- High-performance LED boards manufactured in-house.

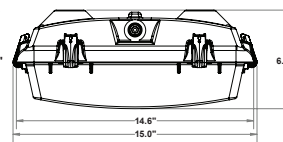
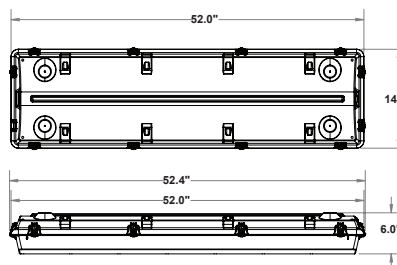
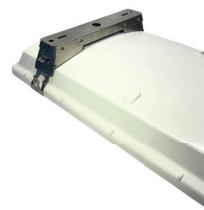
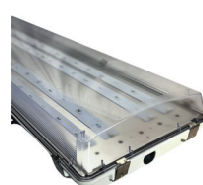
Options

- Wide range of lumen outputs to meet diverse requirements.
- Variety of lens options available.
- Customizable color temperature and CRI values for optimal lighting.
- Pre-wired whips (specify in ordering code if required).

Mounting

- Surface - mounts directly to any ceiling or wall.
- Suspension - chain hangers available as additional option.

Approved for use in Canada and USA, QPS certified. Includes standard 5-year warranty—view our warranty policy for complete details.



NEMA 4X



5 YEAR
WARRANTY



Ordering Guide Example: LZW4-8C40K30L-347D1NW-FSSSCM

CRI	CCT	Lumens	Voltage	Driver	0-10V Wiring	Lens	Latches	Mounting
8C 80	30K 3000K	390L 39,000	UNV 120-277V	D1 0-10V 1%	NW Not Wired for DIM	CS Clear Smooth	SS Stainless Steel	CH Chain Mount Hooks
9C 90	40K 4000K	360L 36,000	347 347V		PW Pre-Wired for DIM	FS Frosted Smooth		MH Surface Mount Hooks
	50K 5000K	330L 33,000						HM Heavy Duty Surface Mount Bracket
	65K 6500K	300L 30,000						
		270L 27,000						
		240L 24,000						

Options

Blank	None
RTP	Retail Packaging
CD2	2' Whip Pre-Wired (Black)
CD3	3' Whip Pre-Wired (Black)
MSI	IP66 Rated Motion Sensor



SCAN FOR TECHNICAL
AND IES FILES

Specification Chart

Lumens	Watts	Clear Smooth	Frosted Smooth	Color	CRI
39,000	242	39,736	38,544	5000K	80
36,000	223	36,560	35,463	5000K	80
33,000	210	34,650	33,611	5000K	80
30,000	188	31,208	30,272	5000K	80
27,000	170	28,220	27,373	5000K	80
24,000	150	24,900	24,153	5000K	80

Testing based on 25°C ambient temperature. Nominal calculations—actual outputs may vary based on product configurations. We reserve the right to correct printing errors or mistakes in our specifications.

All information on this sheet is for informational use and may not be changed or edited without approval from JW LED Inc. We reserve the right to correct printing errors or modify specifications without prior notice.